

---

# Table of Contents

<b>Chapter I</b>	<b>Introduction</b>	<b>1</b>
<b>Chapter II</b>	<b>Enabling multilanguage support</b>	<b>1</b>
<b>Chapter III</b>	<b>Functions description</b>	<b>5</b>

## 1 Introduction



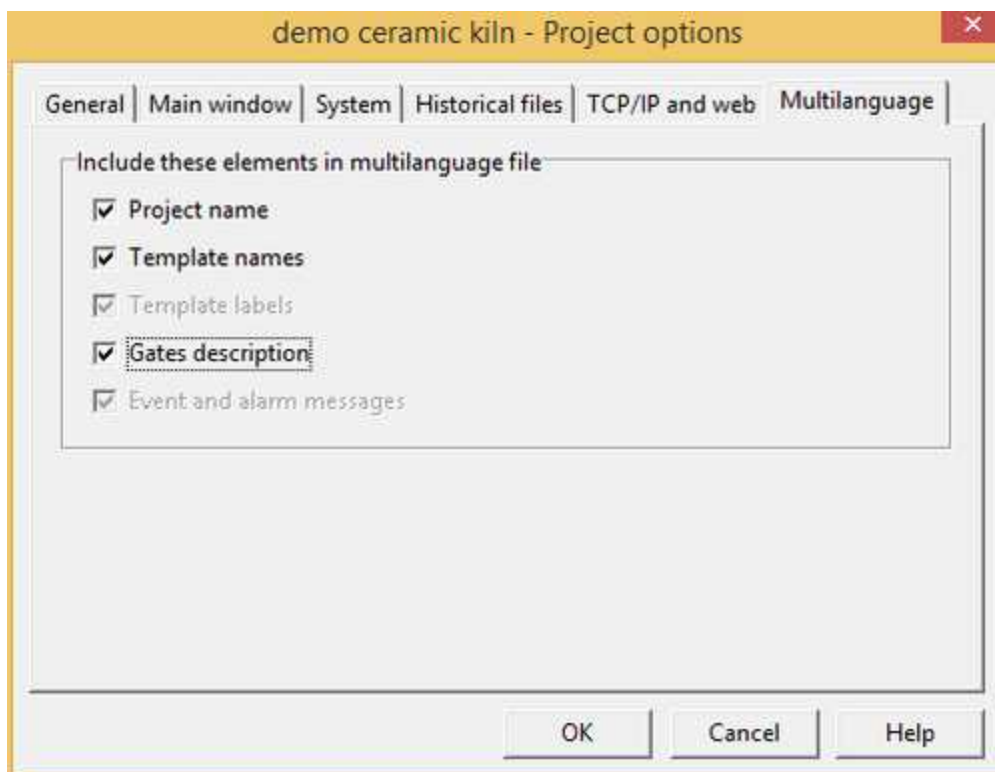
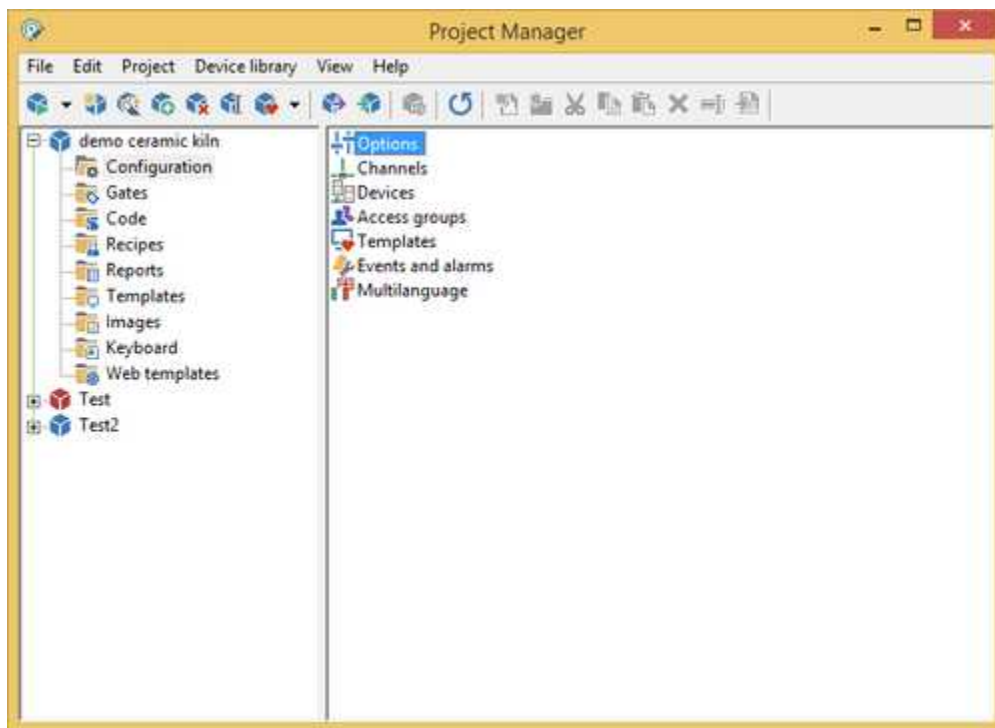
Often presents the need of having to develop the same application in different languages, for ease of use by the end user. However it is not necessary to generate multiple copies of the same application and then proceed with the translation for each of them; through the instrument *Multilanguage Editor* is possible to equip a single application of the multilanguage support and then associate it up to a maximum of 10 languages.

## 2 Enabling multilanguage support

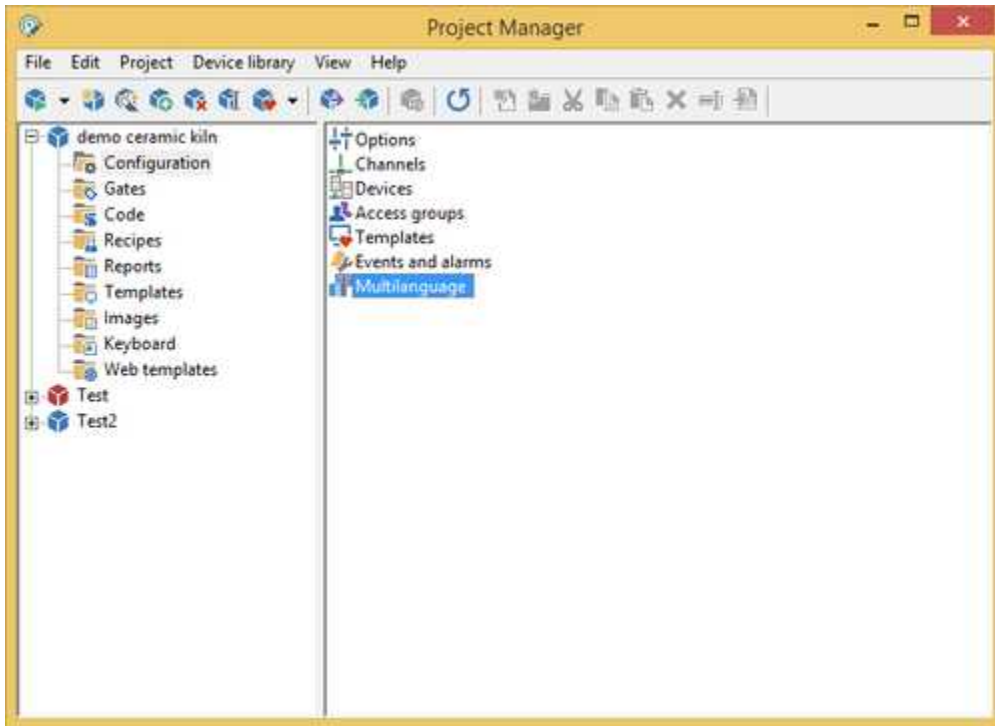
To enable multilanguage support in an application you must do the following:

**1** - Develop the application in the base language.

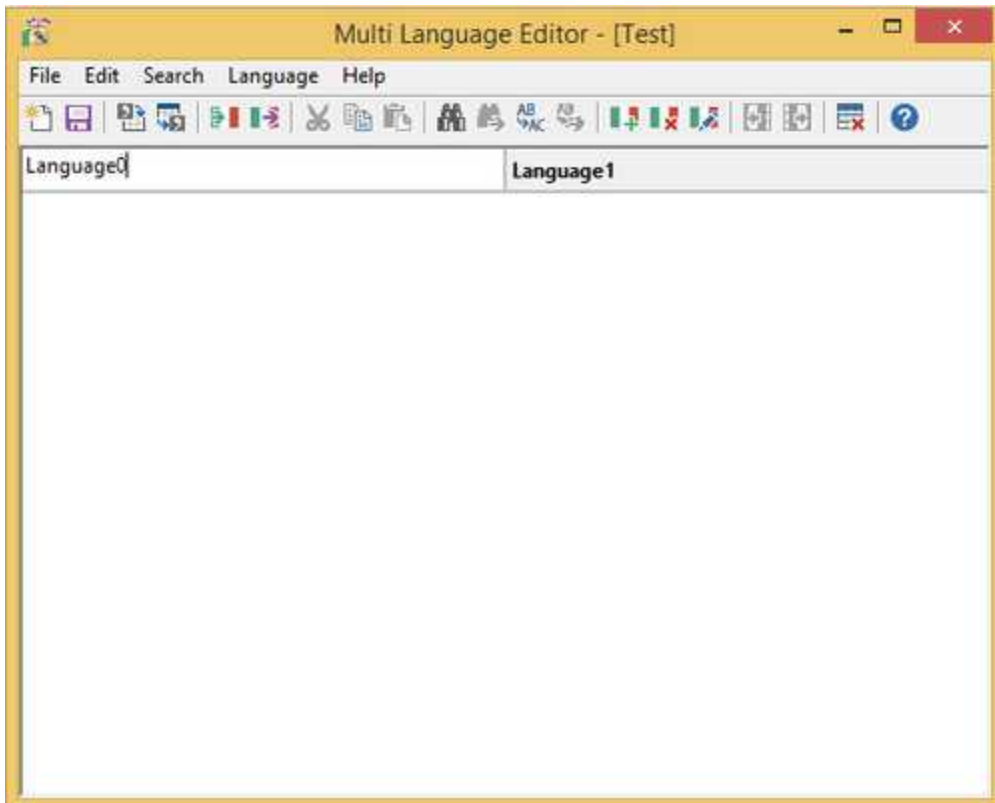
**2** - Once finished developing, activate Project Manager, select the application, *Configuration-Options-Multilingual* and possibly indicate, using the checkboxes in the picture, if you want to include in the list of texts to translate the name of the project, the name of templates and the gates description. In the end, press *OK* to confirm the selection.



3 - In Project Manager select (project) - *Configuration*, and double-click on *Multilingual*: will open the Multilanguage Editor.



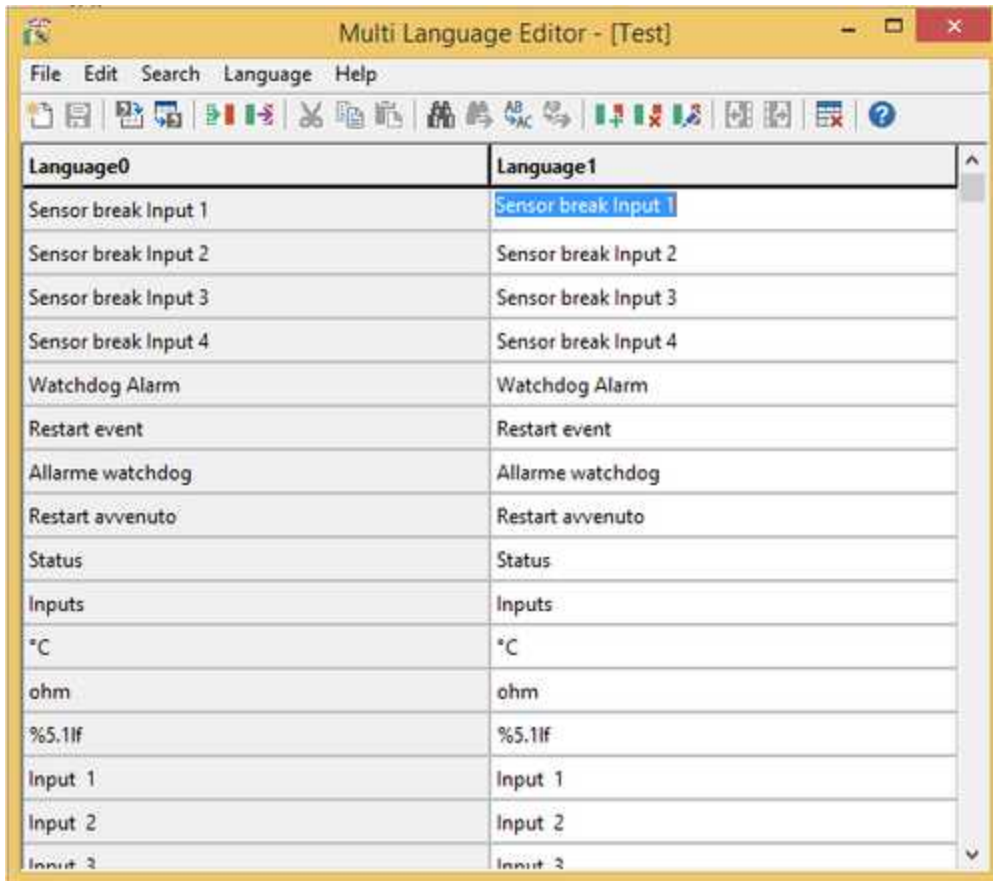
4 - Select *File - New* to delete all texts that were captured during the application development: among them there could be no more texts used.



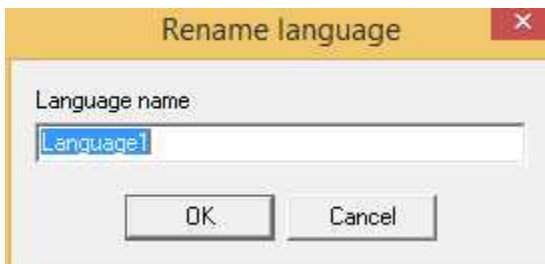
After you save and close Multilanguage Editor.

**5** - Run the application and open one by one all the templates available to ensure to extract all the texts to be translated and then terminate the application.

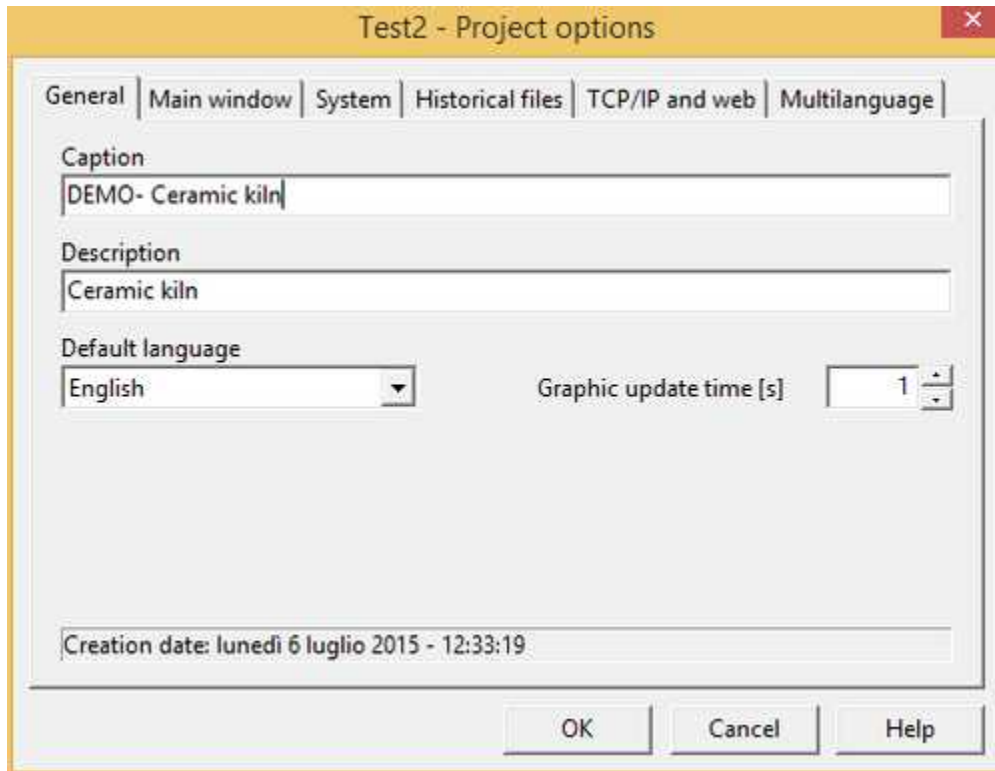
**6** - Always from indicated project in the Project Manager, select *Configuration*, and double-click on *Multilanguage*: will open again Multilanguage Editor that will show on the first column all texts extracted from the application and a second column that is a copy of the base language, but on which you can perform translations line by line.



**7** - After completing all the translations, multilingual support will still not active until you proceed with the renaming of the base language "Language0" to the actual name of the language (eg "English"). To do so, simply click on the column header. This must be done for any other languages in the application.



8 - Once the previous operation have been completed and saved the whole, we have a chance in ProjectManager to select the language in which we want to start the application. The selection can be made indicating the application and selecting *Configuration-Options-General-Default languaget*.

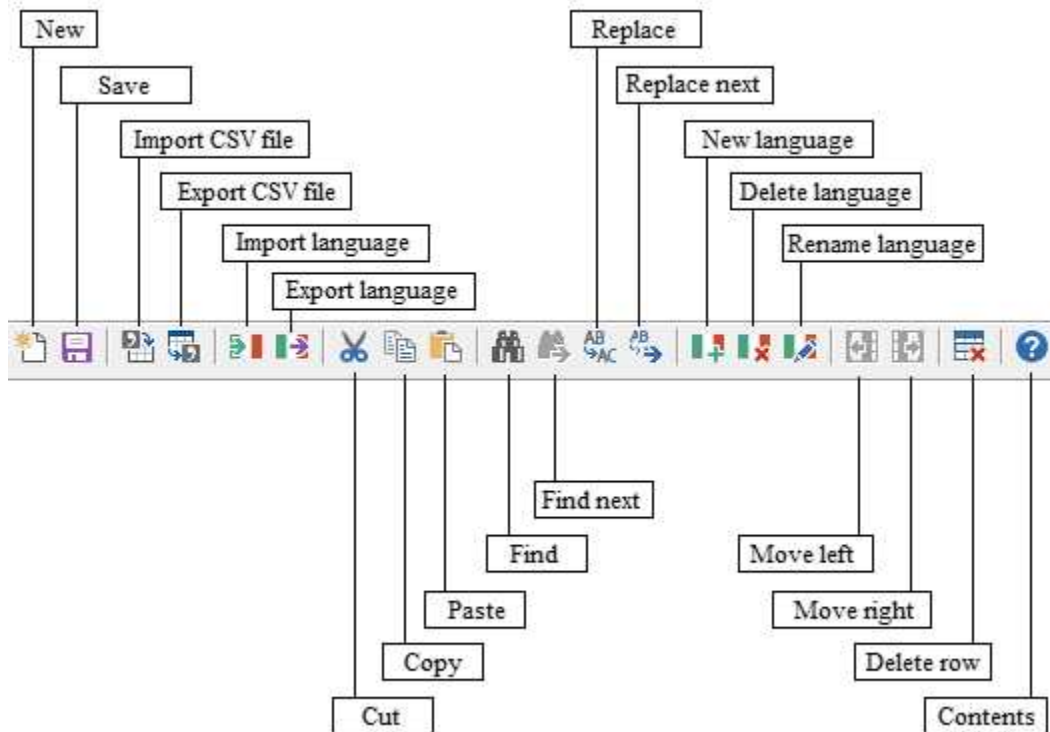


There is also the possibility to change language during application running via the function code `SetCurrentLanguage ()` or, if the Toolbar is displayed, with the following button



### 3 Functions description

Functions provided by the Multilanguage Editor available as menu item and Toolbar buttons:



### File menu

- **New** : deletes all defined languages.
- **Save** : save table of all defined languages.
- **Import CSV file** : imports table of defined languages from a CSV file.
- **Export CSV file** : exports table of defined languages to a CSV file.
- **Import language** : imports a language from a text file (Language Export / Import).
- **Export language** : exports a language to a text file (Language Export / Import).
- **Exit** : exit from Multilanguage Editor.

### Edit menu

- **Cut** : cut selected text.
- **Copy** : copy in memory the selected text.
- **Paste** : substitute the selected text with text previous copied in memory.
- **Delete row**: permit to delete a row of the table.

### Search menu

- **Find** : search in the column the selected text.
- **Find next** : continues the search in the column of the text previously selected.
- **Replace** : substitutes in the column the selected text with the specified text.
- **Replace next** : continues the substitution in the column of the previous selected text with the previous specified text.

### Language menu

- **New language** : adds a new language by copying the base language.
- **Delete language** : eliminates the selected language.
- **Rename language** : renames the selected language.

- **Move left** : move the selected language one column to the left.
- **Move right** : move the selected language one column to the right.

### **Help menu**

- **Contents** : show this help contents.